



981 Joseph E Lowery Blvd, NW
Suite 106
Atlanta, GA 30318
p 888.995.4263
f 888.995.6636



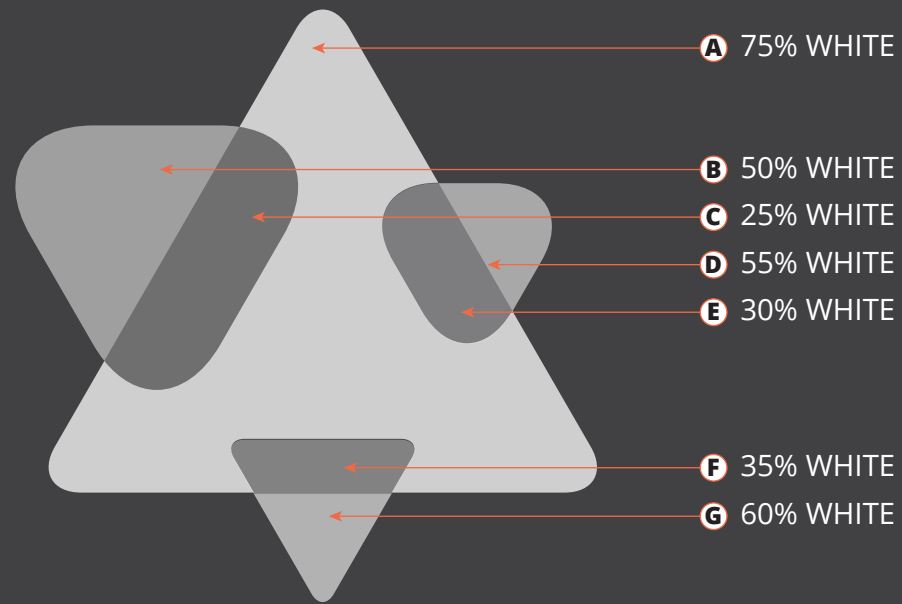
CROWNE PLAZA ATLANTA MIDTOWN
CP IGNITION MARKETPLACE

ATLANTA MIDTOWN
590 West Peachtree St NW
Atlanta, GA 30308

**EXTERIOR BRANDING
STOREFRONT DETAIL**

LEGEND

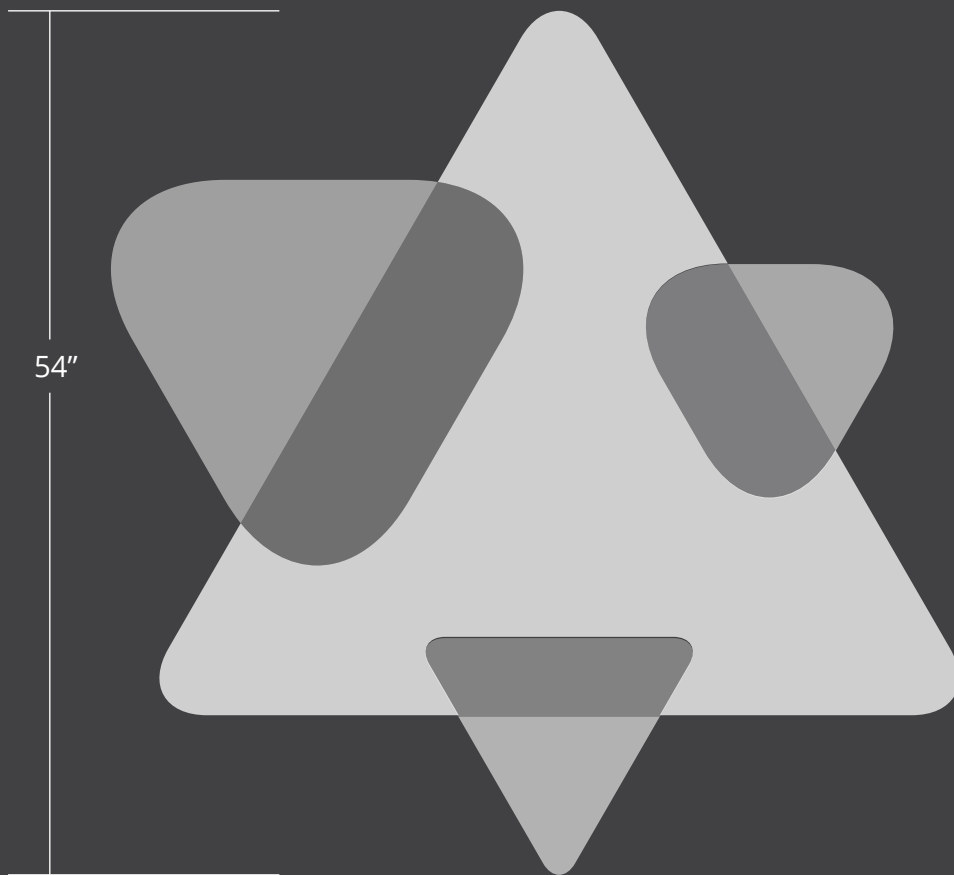
Manufacture and install four decals on clear vinyl film, using varying intensities of white ink. See color detail at left.



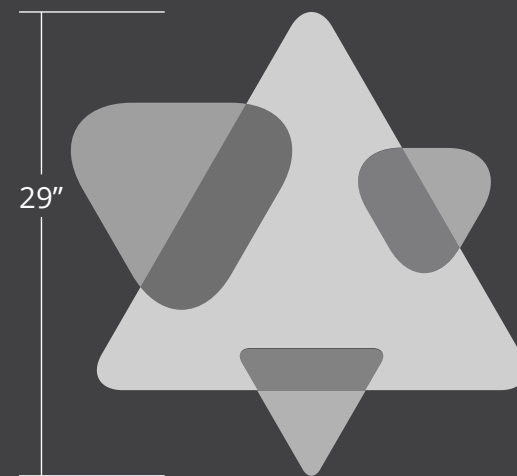
1 LOGO INTENSITY · DETAIL



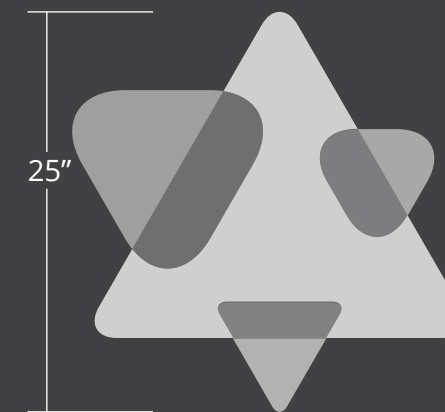
A DECAL #1
scale: 1" = 1'-0"



B DECAL #2
scale: 1" = 1'-0"



C DECAL #3
scale: 1" = 1'-0"



D DECAL #4
scale: 1" = 1'-0"

CUSTOMER
Crowne Plaza

JOB NAME
Crowne Plaza Atlanta Midtown

JOB LOCATION
590 West Peachtree St NW
Atlanta, GA 30308

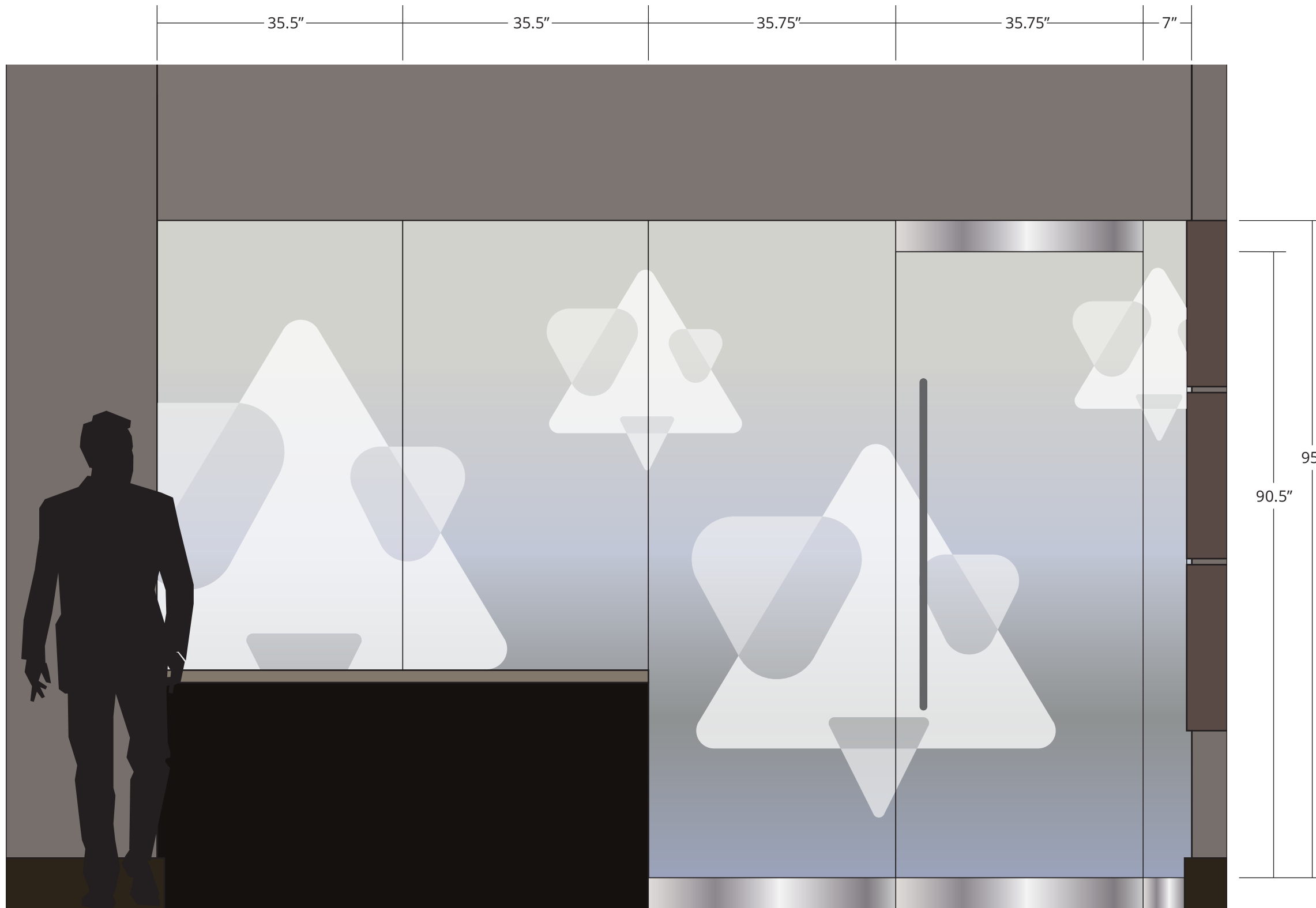
DATE/NOTES
05/02/16 AA: drawn
05/08/16 AA: update logo

981 Joseph E Lowery Blvd, NW
Suite 106
Atlanta, GA 30318
p 888.995.4263
f 888.995.6636



This drawing/concept and all intellectual property rights (including, without limitation, all copyright and design rights) subsisting in this drawing and related information, belongs to National Glazing Solutions and may not be used or reproduced without the expressed, written consent of National Glazing Solutions.

It is the customer's responsibility to ensure that the drawings are correct in all areas. Please be sure to double-check all logos, colors, spelling, layout, materials, and installation surface before approving any job. An authorized signature is required before a job can be entered into production.



1 STOREFRONT
scale: 3/4" = 1'-0"

EXTERIOR BRANDING STOREFRONT DETAIL

LEGEND

Manufacture and install four decals on clear vinyl film, using varying intensities of white ink. See color detail at left.

CUSTOMER

Crowne Plaza

JOB NAME

Crowne Plaza Atlanta Midtown

JOB LOCATION

590 West Peachtree St NW
Atlanta, GA 30308

DATE/NOTES

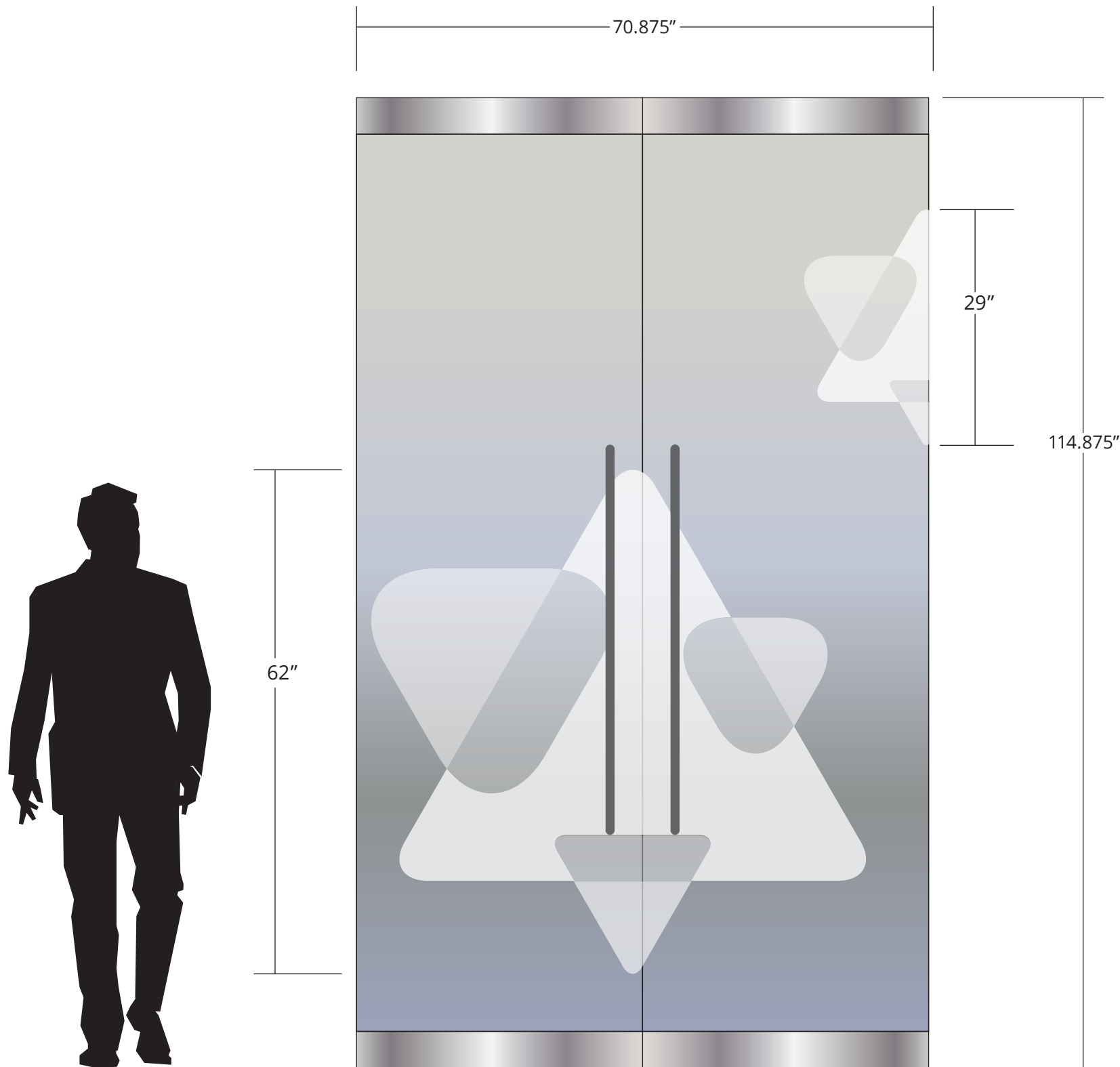
05/02/16 AA: drawn

981 Joseph E Lowery Blvd, NW
Suite 106
Atlanta, GA 30318
p 888.995.4263
f 888.995.6636



This drawing/concept and all intellectual property rights (including, without limitation, all copyright and design rights) subsisting in this drawing and related information, belongs to National Glazing Solutions and may not be used or reproduced without the expressed, written consent of National Glazing Solutions.

It is the customer's responsibility to ensure that the drawings are correct in all areas. Please be sure to double-check all logos, colors, spelling, layout, materials, and installation surface before approving any job. An authorized signature is required before a job can be entered into production.



1 STOREFRONT
scale: 3/4" = 1'-0"

EXTERIOR BRANDING ALTERNATE ENTRY

LEGEND

Manufacture and install on alternate entry doors one 62" high decal and one 29" high decal on clear vinyl film, using varying intensities of white ink. See color detail on page 1.

CUSTOMER

Crowne Plaza

JOB NAME

Crowne Plaza Atlanta Midtown

JOB LOCATION

590 West Peachtree St NW
Atlanta, GA 30308

DATE/NOTES

05/02/16 AA: drawn

981 Joseph E Lowery Blvd, NW
Suite 106
Atlanta, GA 30318
p 888.995.4263
f 888.995.6636



This drawing/concept and all intellectual property rights (including, without limitation, all copyright and design rights) subsisting in this drawing and related information, belongs to National Glazing Solutions and may not be used or reproduced without the expressed, written consent of National Glazing Solutions.

It is the customer's responsibility to ensure that the drawings are correct in all areas. Please be sure to double-check all logos, colors, spelling, layout, materials, and installation surface before approving any job. An authorized signature is required before a job can be entered into production.